

SHORT-STROKE CYLINDERS

SERIES QP - QPR

Series QP: single and double-acting, magnetic

Series QPR: double-acting magnetic, non-rotating

∅ 12, 16, 20, 25, 32, 40, 50, 63, 80, 100 mm



Series QP - QPR cylinders are available in 10 bore sizes, from ∅12 to ∅100. Their compact dimension allows the installation in small spaces. Because of their particular construction, they can be mounted by means of feet or trunnion.

The guides are manufactured in the external profile parallel to the sliding axis on three sides. These are used to locate the switches that sense the piston position. The non rotating guides make the QPR suitable for supply operations and for handling equipment.

GENERAL DATA

Type of construction	Series QP: compact profile Series QPR: compact with non rotating guides
Operation	Series QP: single and double-acting Series QPR: double-acting
Materials	body: anodized AL rod: rolled stainless steel piston seals: PU rod seals: PU (∅ 12 ÷ 25 mm) - NBR (∅ 32 ÷ 100 mm)
Operating temperature	0°C ÷ 80°C (with dry air -20°C)
Assembly	by means of screws or brackets
Operating pressure	1 ÷ 10 bar (double-acting); 2 ÷ 10 bar (single-acting)
Fluid	filtered air, without lubrication. If lubricated air is used, it is recommended to use oil ISOVG32. Once applied the lubrication should never be interrupted.
Strokes (min-max)	Series QP: 1 ÷ 150 mm (∅12 ÷ ∅25) - 1 ÷ 200 mm (∅32 ÷ ∅100) Series QPR: 1 ÷ 50 mm (∅12) - 1 ÷ 75 mm (∅16) - 1 ÷ 100 mm (∅20 ÷ ∅100)
Strokes	the minimum stroke for use of the sensors is 10 mm
Bores	∅ 12, 16, 20, 25, 32, 40, 50, 63, 80, 100

SHORT-STROKE CYLINDERS
SERIES QP - QPR - STANDARD STROKES

PNEUMATIC ACTUATION

1

STANDARD STROKES FOR SHORT-STROKE CYLINDERS SERIES QP AND QPR

■ = Double-acting ✕ = Single-acting ● = Non-rotating

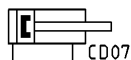
∅	5	10	15	20	25	30	3/5	40	45	50	60	75	80	100
12	■ ✕ ●	■ ✕ ●	■ ✕ ●	■ ✕	■ ✕ ●	■ ●	■	■	■					
16	■ ✕ ●	■ ✕ ●	■ ✕ ●	■ ✕ ●	■ ✕ ●	■ ●	■ ●	■ ●	■ ●	■ ●	■ ●	■ ●	■	■
20	■ ✕ ●	■ ✕ ●	■ ✕ ●	■ ✕ ●	■ ✕ ●	■ ●	■ ●	■ ●	■ ●	■ ●	■ ●	■ ●	■ ●	■ ●
25	■ ✕ ●	■ ✕ ●	■ ✕ ●	■ ✕ ●	■ ✕ ●	■ ●	■ ●	■ ●	■ ●	■ ●	■ ●	■ ●	■ ●	■ ●
32	■ ✕ ●	■ ✕ ●	■ ✕ ●	■ ✕ ●	■ ✕ ●	■ ●	■ ●	■ ●	■ ●	■ ●	■ ●	■ ●	■ ●	■ ●
40	■ ✕ ●	■ ✕ ●	■ ✕ ●	■ ✕ ●	■ ✕ ●	■ ●	■ ●	■ ●	■ ●	■ ●	■ ●	■ ●	■ ●	■ ●
50	■ ✕ ●	■ ✕ ●	■ ✕ ●	■ ✕ ●	■ ✕ ●	■ ●	■ ●	■ ●	■ ●	■ ●	■ ●	■ ●	■ ●	■ ●
63	■ ✕ ●	■ ✕ ●	■ ✕ ●	■ ✕ ●	■ ✕ ●	■ ●	■ ●	■ ●	■ ●	■ ●	■ ●	■ ●	■ ●	■ ●
80	■ ✕ ●	■ ✕ ●	■ ✕ ●	■ ✕ ●	■ ✕ ●	■ ●	■ ●	■ ●	■ ●	■ ●	■ ●	■ ●	■ ●	■ ●
100	■ ✕ ●	■ ✕ ●	■ ✕ ●	■ ✕ ●	■ ✕ ●	■ ●	■ ●	■ ●	■ ●	■ ●	■ ●	■ ●	■ ●	■ ●

CODING EXAMPLE

QP	2	A	050	A	050
QP	SERIES QP = standard QPR = standard non-rotating				
2	OPERATION 1 = single-acting, front spring (only QP) 2 = double-acting 3 = double-acting, through-rod				PNEUMATIC SYMBOLS CS09 CD07 CD14
A	MATERIALS A = rolled stainless steel rod - AL tube profile				
050	BORE 012 = 12 mm 016 = 16 mm 020 = 20 mm 025 = 25 mm 032 = 32 mm 040 = 40 mm 050 = 50 mm 063 = 63 mm 080 = 80 mm 100 = 100 mm				
A	TYPE OF MOUNTING A = standard				
050	STROKE (see the table)				
	= standard V = FKM rod seal W = all FKM seals (∅ 12 excepted)				

PNEUMATIC SYMBOLS

The pneumatic symbols which have been indicated in the CODING EXAMPLE are shown below.



ACCESSORIES FOR SHORT-STROKE CYLINDERS SERIES QP

Foot mount Mod. B

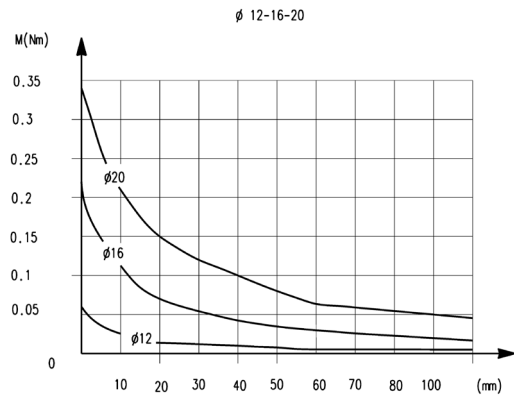
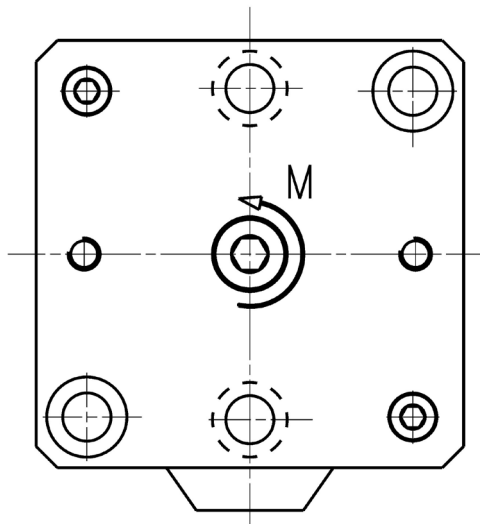


Male trunnion Mod. L

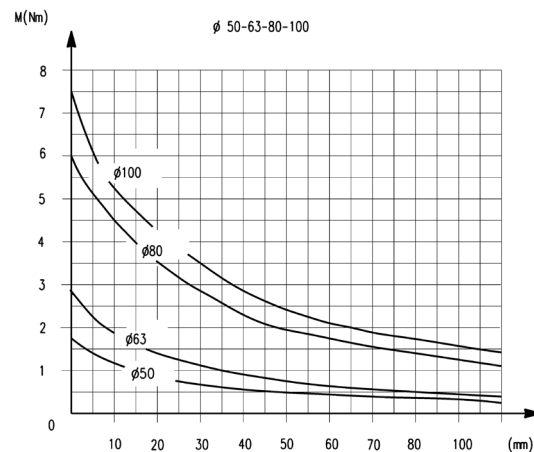
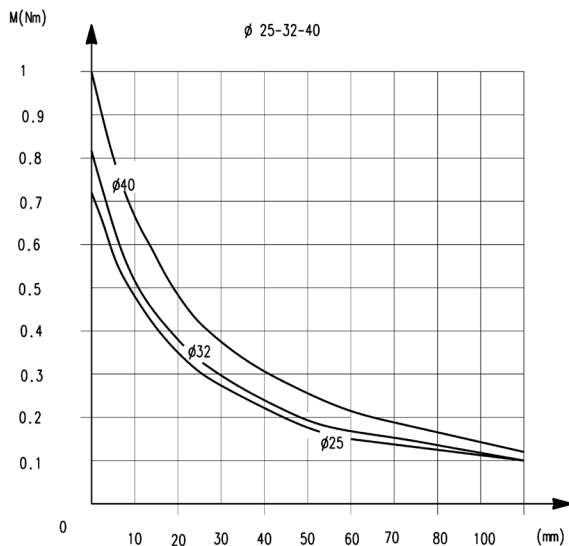


All accessories are supplied separately.

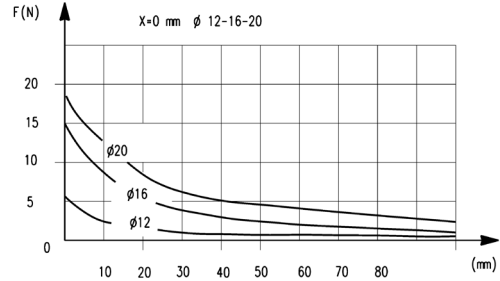
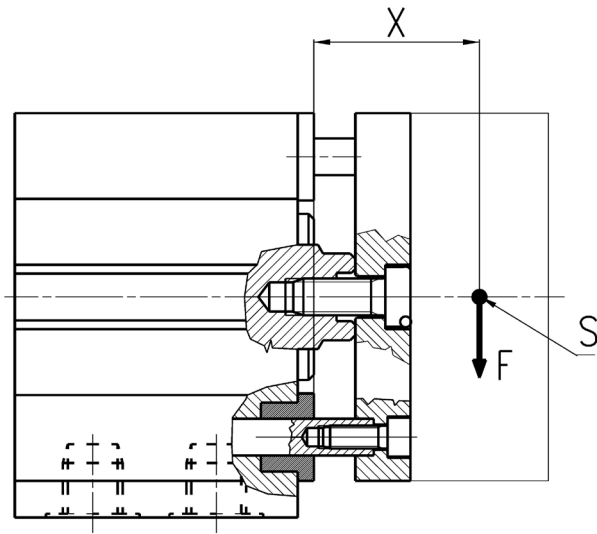
TORQUE MOMENT ACCORDING TO STROKE C



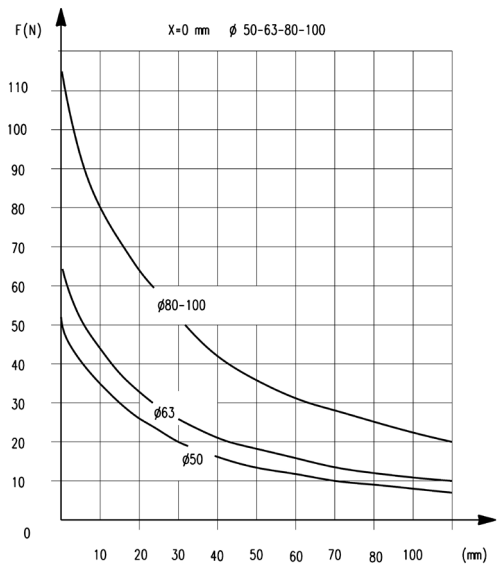
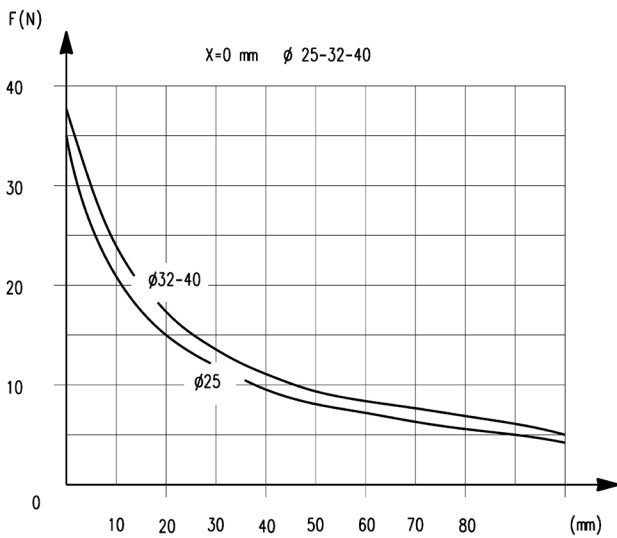
TORQUE MOMENT ACCORDING TO STROKE C



TRANSVERSAL LOAD ACCORDING TO PROJECTION " X "



TRANSVERSAL LOAD ACCORDING TO PROJECTION " X "



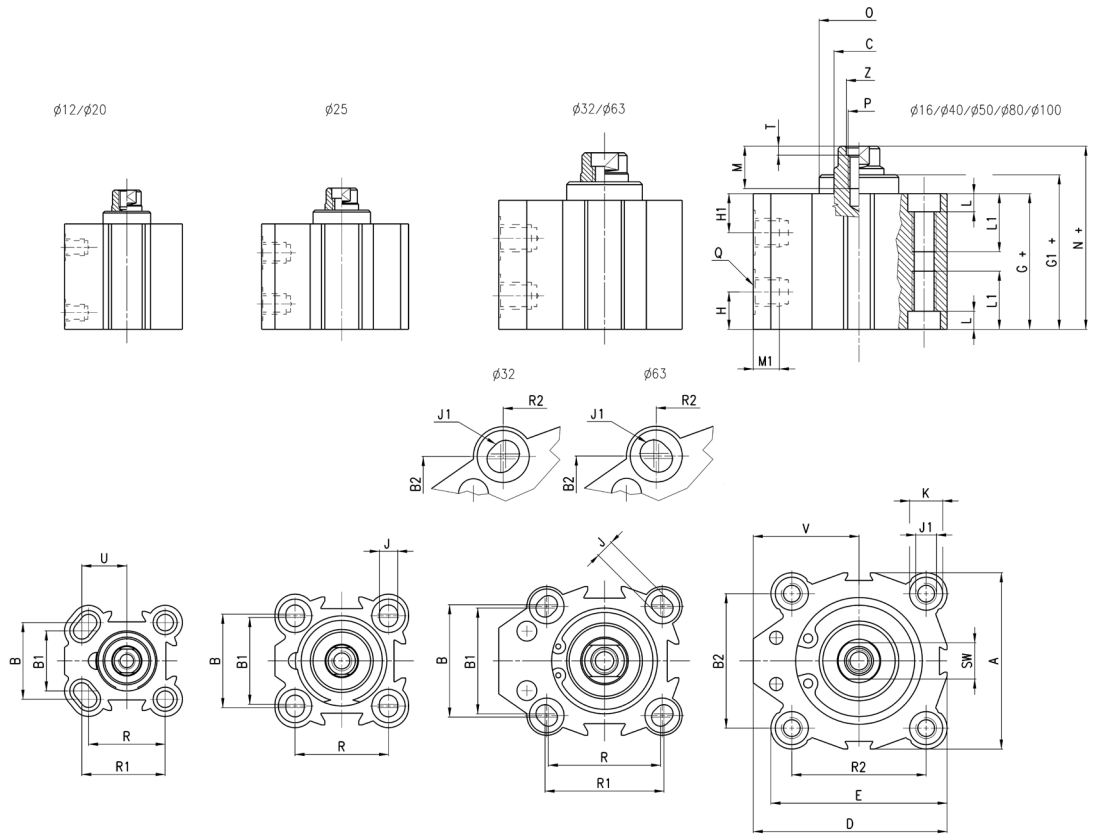
F = transversal force

SHORT-STROKE CYLINDERS
SERIES QP - QPR - DIMENSIONAL CHARACTERISTICS

Short-stroke cylinders Series QP



Note:
 The cylinder's end stop must be provided externally.
 For single-acting cylinders ϕ 12, 16, 20 and 25 add 5 mm to G+, G1+ and N+ dimensions.



+ = add the stroke

ϕ	A	B	B1	B2	ϕ C	D	E	G+	G1+	H1	H	J	J1	K	L	L1	M	M1	N+	ϕ O	P	Q	R	R1	R2	SW	T	U	V	Z
12	23,8	15,5	13	-	6	25	25	29,6	29,6	12,3	7,8	3,5	-	5,8	3	-	5,5	4,5	32,9	-	M3	M5	15,5	16,75	-	5	-	9	13,15	-
16	29	20	-	-	8	29	29	32	32,4	10,9	8,7	3,5	-	5,8	3	-	8	4,5	36,4	16,6	M4	M5	20	-	-	6	-	14,5	-	
20	37	25,5	20	-	10	39,25	39,25	31,2	31,7	9,8	9,8	5,5	-	9	6	-	8	4,5	36	19,5	M6	M5	25,5	27,75	-	8	-	15	20,75	-
25	40	28	26	-	10	40	40	32,1	33,5	8	6,9	5,5	-	10	5,5	-	8	4,5	37,5	22	M6	M5	28	-	-	8	-	20	-	
32	45	34	32	33	12	55,5	47	39,5	40	9,5	9,5	5,5	M8	10,5	6	21	10	7,5	44	23,5	M6	G1\8	34	36	35	10	2,5	32	7	
40	52	-	-	40	16	57	52	42,4	43,4	10,7	10,7	5,5	M8	9	6	21	13,5	7,5	47,9	29,6	M8	G1\8	-	-	40	13	3,5	31	8,5	
50	64	-	-	50	16	72	64	42,2	44	11,2	11,2	6,5	M8	10,5	6	21	13,5	9	48,4	37,5	M8	G1\4	-	-	50	13	3,5	40	8,5	
63	80	62	60	61	20	88	80	49,5	50,1	13	13	8,5	M12	15	8,5	31,5	13,5	9	54	50	M8	G1\4	60	62	61	17	4	48	8,5	
80	98	-	-	77	25	104	98	57,5	58,1	16,2	16,2	10,5	M12	17	10,5	31,5	15	10,5	63,5	62	M16	G3\8	-	-	77	22	4	55	16,5	
100	117	-	-	94	25	123,5	117	68,5	69,1	20,3	20,3	10,5	M12	17	10,5	31,5	15	10,5	74,5	80	M16	G3\8	-	-	94	22	4	65	16,5	

PNEUMATIC ACTUATION

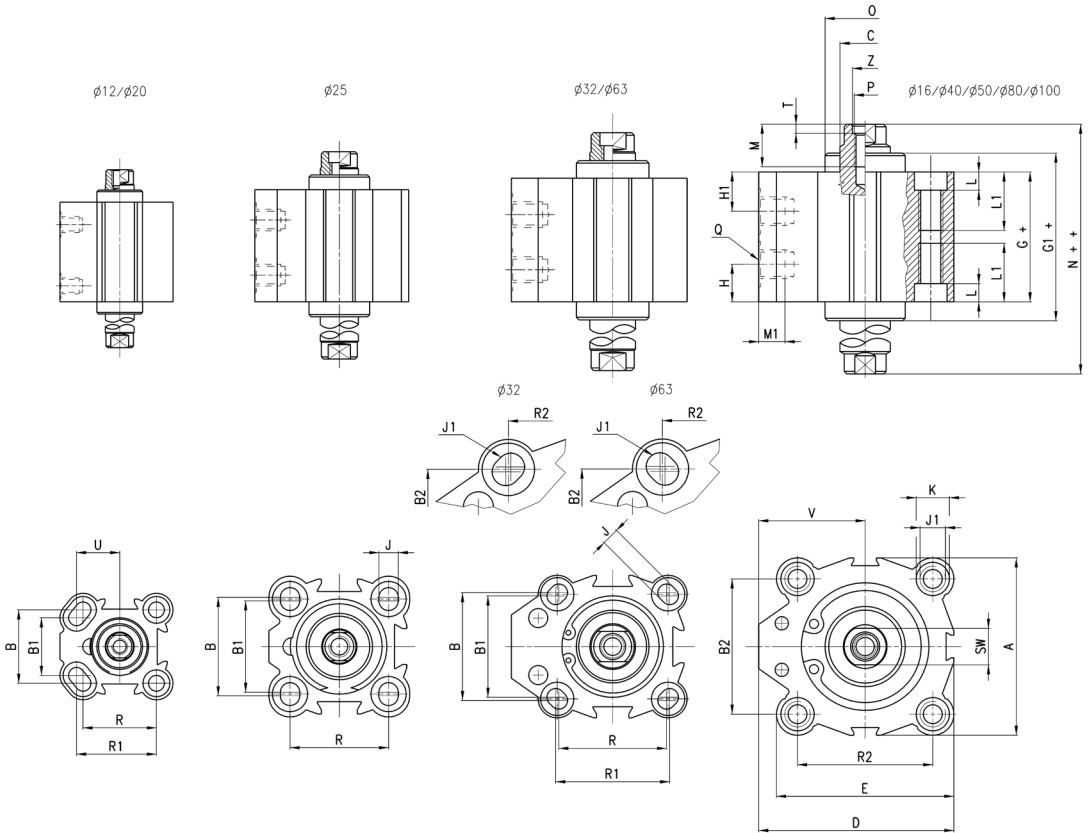
1

SHORT-STROKE CYLINDERS
SERIES QP - QPR - DIMENSIONAL CHARACTERISTICS
Short-stroke cylinders Series QP

Note:
The cylinder's end stop must be provided externally.

PNEUMATIC ACTUATION

1

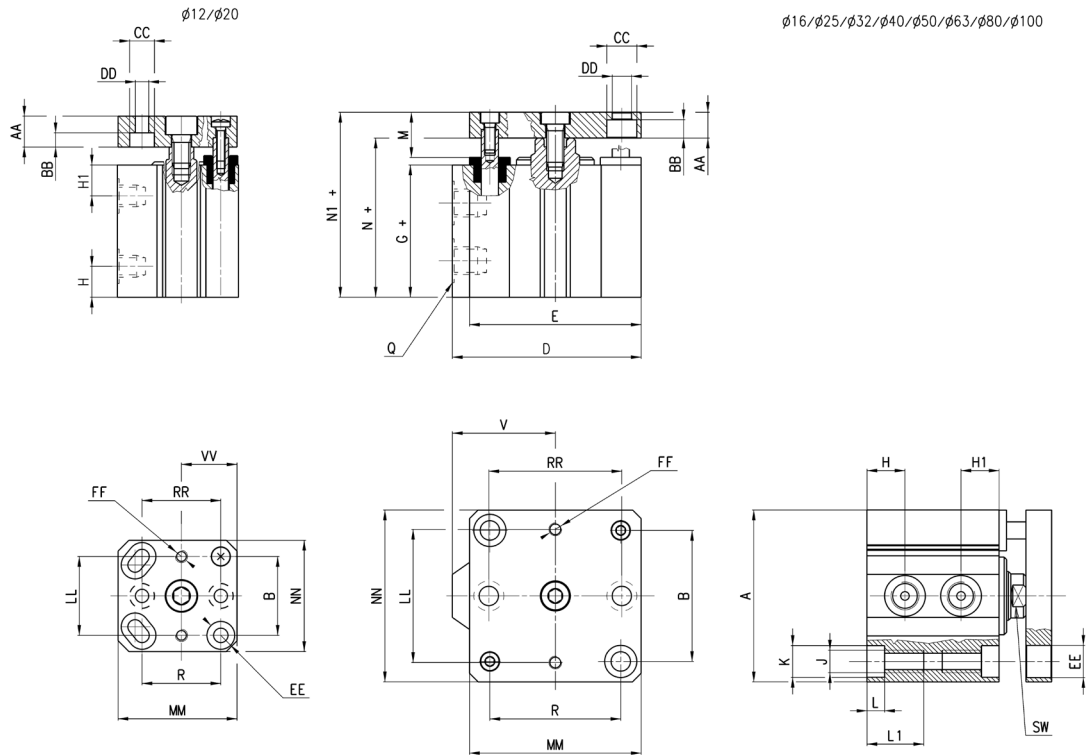


+ = add the stroke once
 += add the stroke twice

Ø	A	B	B1	B2	$\rho^{(h8)}$	D	E	G+	G1+	H1	H	J	J1	K	L	L1	M	M1	N++	O	P	Q	R	R1	R2	SW	T	U	V	Z
12	23,8	15,5	13	-	6	25	25	34,5	34,5	12,3	12,3	3,5	-	5,8	3	-	5,5	4,5	41	-	M3	M5	15,5	16,75	-	5	-	9	13,15	-
16	29	20	-	-	8	29	29	38	38,8	10,9	10,9	3,5	-	5,8	3	-	8	4,5	46,4	16,6	M4	M5	20	-	-	6	-	14,5	-	
20	37	25,5	20	-	10	39,25	39,25	38,1	39,1	9,8	9,8	5,5	-	9	6	-	8	4,5	47,7	19,5	M6	M5	25,5	27,75	-	8	-	15	20,75	-
25	40	28	26	-	10	40	40	36,3	39,1	8	8	5,5	-	10	5,5	-	8	4,5	47,1	22	M6	M5	28	-	-	8	-	20	-	
32	45	34	32	33	12	55,5	47	39,5	40,5	9,5	9,5	5,5	M8	10,5	6	21	10	7,5	48,5	23,5	M6	G1/8	34	36	35	10	2,5	32	7	
40	52	-	-	40	16	57	52	42,4	44,4	10,7	10,7	5,5	M8	9	6	21	13,5	7,5	53,4	29,6	M8	G1/8	-	-	40	13	3,5	31	8,5	
50	64	-	-	50	16	72	64	42,2	45,8	11,2	11,2	6,5	M8	10,5	6	21	13,5	9	54,8	37,5	M8	G1/4	-	-	50	13	3,5	40	8,5	
63	80	62	60	61	20	88	80	49,5	50,7	13	13	8,5	M12	15	8,5	31,5	13,5	9	58,5	50	M8	G1/4	60	62	61	17	4	48	8,5	
80	98	-	-	77	25	104	98	57,5	58,7	16,2	16,2	10,5	M12	17	10,5	31,5	15	10,5	69,5	62	M16	G3/8	-	-	77	22	4	55	16,5	
100	117	-	-	94	25	123,5	117	68,5	69,7	20,3	20,3	10,5	M12	17	10,5	31,5	15	10,5	80,5	80	M16	G3/8	-	-	94	22	4	65	16,5	

Short-stroke cylinder Series QPR

Note:
 The cylinder's end stop must be provided externally.



+ = add the stroke

∅	A	B	D	E	G+	H1	H	J	K	L	L1	N+	N1+	Q	R	SW	V	AA	BB	CC	DD	EE	FF	LL	MM	NN	RR	VV
12	23,8	15,5	25	25	29,6	12,3	7,8	3,5	5,8	3	-	32,9	37,9	M5	15,5	5	13,15	5	3,5	6,2	3,2	5,8	M3	15,5	25	24	15,5	12
16	29	20	29	29	32	10,9	8,7	3,5	5,8	3	-	36,4	41,4	M5	20	6	14,5	5	3,5	6,2	3,2	6,5	M3	20	28	28	20	-
20	37	25,5	39,25	39,25	31,2	9,8	9,8	5,5	9	6	-	36	46	M5	25,5	8	20,75	10	4,6	8	4,2	9	M4	25,5	38,5	36	25,5	18
25	40	28	40	40	32,1	8	6,9	5,5	10	5,5	-	37,5	47,5	M5	28	8	20	10	4,6	8	4,2	10	M4	27	40	40	28	-
32	45	33	55,5	47	39,5	9,5	9,5	M8	10,5	6	21	44	54	G1/8	35	10	32	10	6	9	5,5	9	M5	32	47	45	36	-
40	52	40	57	52	42,4	10,7	10,7	M8	9	6	21	47,9	57,9	G1/8	40	13	31	10	6	9	5,5	9	M5	40	52	50	40	-
50	64	50	72	64	42,2	11,2	11,2	M8	10,5	6	21	48,4	60,4	G1/4	50	13	40	12	6,8	10,5	6,5	10	M6	50	65	65	50	-
63	80	61	88	80	49,5	13	13	M12	15	8,5	31,5	54	66	G1/4	61	17	48	12	8,5	14	9	15	M6	62	80	80	62	-
80	98	77	104	98	57,5	16,2	16,2	M12	17	10,5	31,5	63,5	78,5	G3/8	77	22	55	15	10	16,5	11	17	M8	77	100	100	77	-
100	117	94	123,5	117	68,5	20,3	20,3	M12	17	10,5	31,5	74,5	89,5	G3/8	94	22	65	15	10	16,5	11	17	M8	94	115	115	94	-

SHORT-STROKE CYLINDERS
SERIES QP - QPR - DIMENSIONAL CHARACTERISTICS

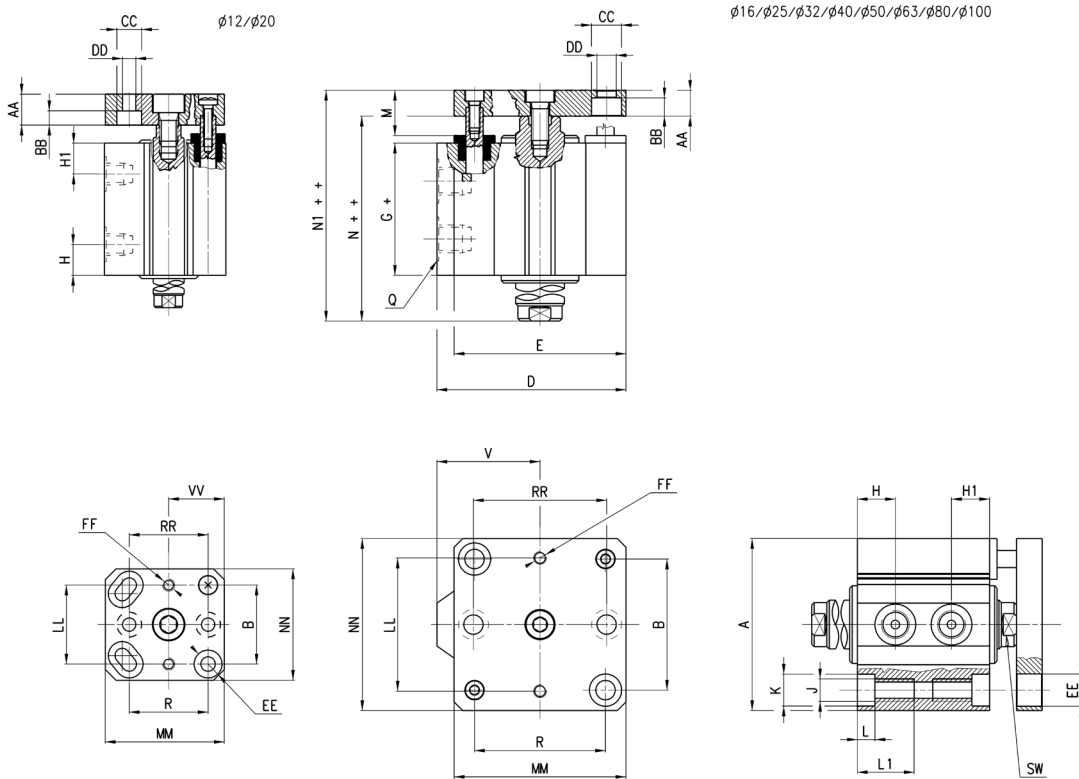
Short-stroke cylinder Series QPR - through-rod

Note:
The cylinder's end stop must be provided externally.



PNEUMATIC ACTUATION

1



+ = add the stroke once
++ = add the stroke twice

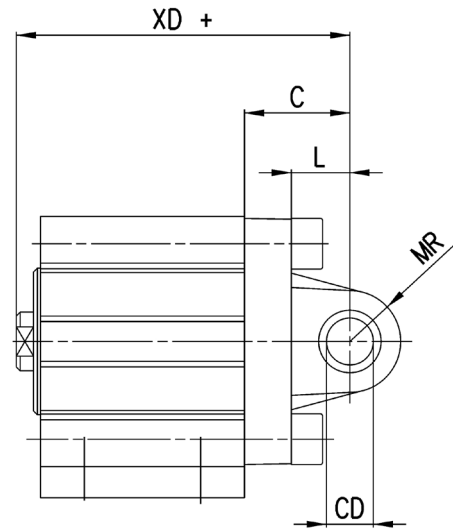
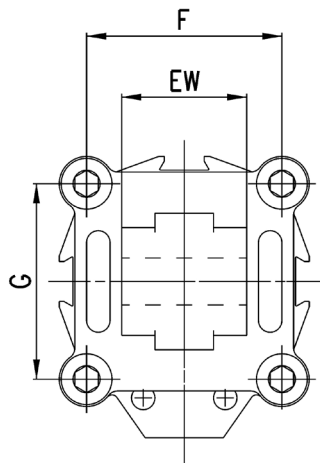
Ø	A	B	D	E	G+	H1	H	J	K	L	L1	N++	N1++	Q	R	SW	V	AA	BB	CC	DD	EE	FF	LL	MM	NN	RR	VV
12	23,8	15,5	25	25	37,3	12,3	12,3	3,5	5,8	3	-	41	46	M5	15,5	5	13,15	5	3,5	6,2	3,2	5,8	M3	15,5	25	24	15,5	12
16	29	20	29	29	38	10,9	10,9	3,5	5,8	3	-	47	52	M5	20	6	14,5	5	3,5	6,2	3,2	6,5	M3	20	28	28	20	-
20	37	25,5	39,25	39,25	38,1	9,8	9,8	5,5	9	6	-	47,7	57,7	M5	25,5	8	20,75	10	4,6	8	4,2	9	M4	25,5	38,5	36	25,5	18
25	40	28	40	40	36,3	8	8	5,5	10	5,5	-	47,1	57,1	M5	28	8	20	10	4,6	8	4,2	10	M4	27	40	40	28	-
32	45	33	55,5	47	39,5	9,5	9,5	M8	10,5	6	21	48,5	58,5	G1\8	35	10	32	10	6	9	5,5	9	M5	32	47	45	36	-
40	52	40	57	52	42,4	10,7	10,7	M8	9	6	21	53,4	63,4	G1\8	40	13	31	10	6	9	5,5	9	M5	40	52	50	40	-
50	64	50	72	64	42,2	11,2	11,2	M8	10,5	6	21	54,8	66,8	G1\4	50	13	40	12	6,8	10,5	6,5	10	M6	50	65	65	50	-
63	80	61	88	80	49,5	13	13	M12	15	8,5	31,5	58,5	70,5	G1\4	61	17	48	12	8,5	14	9	15	M6	62	80	80	62	-
80	98	77	104	98	57,5	16,2	16,2	M12	17	10,5	31,5	69,5	84,5	G3\8	77	22	55	15	10	16,5	11	17	M8	77	100	100	77	-
100	117	94	123,5	117	68,5	20,3	20,3	M12	17	10,5	31,5	80,5	95,5	G3\8	94	22	65	15	10	16,5	11	17	M8	94	115	115	94	-

Rear male trunnion Mod. L



Material:
aluminium

Supplied with:
4x screws
1x trunnion



+ = add the stroke

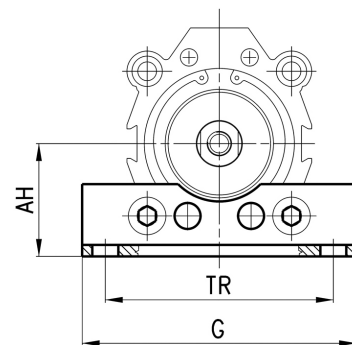
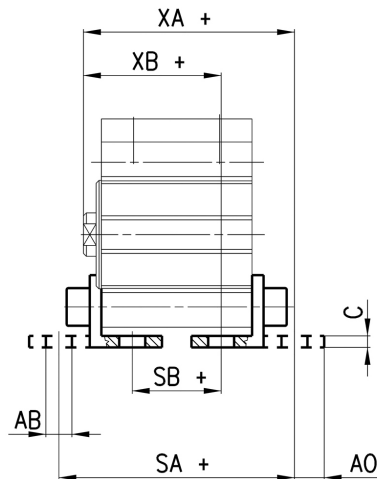
Mod.	∅	CD ⁹⁹	MR	L	C	XD +	F	G	EW
L-QP-32	32	10	9	12	22	66	33	35	26
L-QP-40	40	12	13	15	25	73	40	40	28
L-QP-50	50	12	13	15	27	75,5	50	50	32
L-QP-63	63	16	15	20	32	86	61	61	40
L-QP-80	80	16	15	24	36	99,5	77	77	50
L-QP-100	100	20	18	29	41	115,5	94	94	60

Feet bracket Mod. B



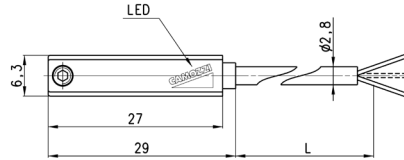
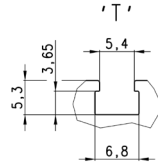
Material:
zinc-plated steel

Supplied with:
2x feet
4x screws



+ = add the stroke

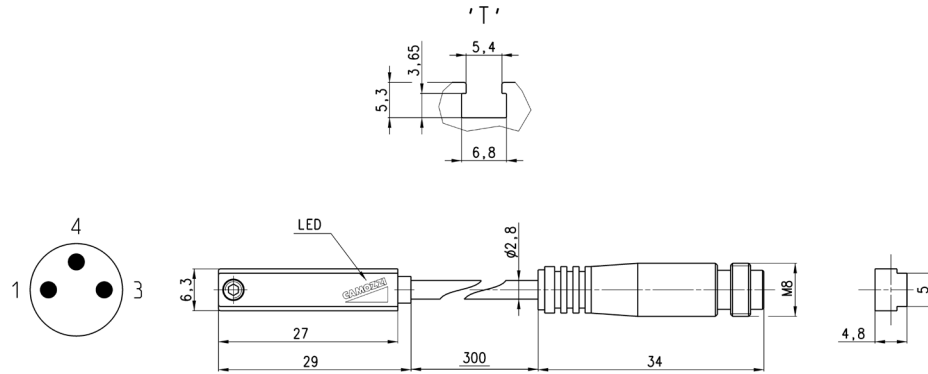
Mod.	∅	C	SA +	XA +	SB +	XB +	TR	G	AB	AH	AO
B-QP-32	32	3	61,9	55,2	23,1	35,8	57	71	6,6	30	8,8
B-QP-40	40	3	64,8	59,1	26	39,7	64	78	6,6	33	8,8
B-QP-50	50	4	71,6	63,1	20,8	37,7	79	95	9	39	10,3
B-QP-63	63	4	81,9	70,2	25,1	41,8	95	113	11	46	13,8
B-QP-80	80	6	96,5	83	30,5	49	118	140	13	59	10,5
B-QP-100	100	6	114,5	97,5	22,5	51,5	137	162	13	71	17

Magnetic proximity switches with 2 or 3 wire cable for T-slot


Mod.	Operation	Connections	Voltage	Output	Max. current	Max Load	Protection	L = length cable
CST-220	Reed	2 wires	10 ÷ 110 V AC/DC-230 V AC	-	250 mA	10 VA / 8 W	None	2 m
CST-220-5	Reed	2 wires	10 ÷ 110 V AC/DC-230 V AC	-	250 mA	10 VA / 8 W	None	5 m
CST-220-12	Reed	2 wires	10 ÷ 110 V AC/DC-230 V AC	-	250 mA	10 VA / 8 W	None	12 m
CST-220EX	Reed	2 wires	10 ÷ 110 V AC/DC-230 V AC	-	250 mA	10 VA / 8 W	None	2 m
CST-220-5EX	Reed	2 wires	10 ÷ 110 V AC/DC-230 V AC	-	250 mA	10 VA / 8 W	None	5 m
CST-220-12EX	Reed	2 wires	10 ÷ 110 V AC/DC-230 V AC	-	250 mA	10 VA / 8 W	None	12 m
CST-232	Reed	3 wires	5 ÷ 30 V AC/DC	PNP	250 mA	10 VA / 8 W	Against polarity reversing	2 m
CST-232-5	Reed	3 wires	5 ÷ 30 V AC/DC	PNP	250 mA	10 VA / 8 W	Against polarity reversing	5 m
CST-232EX	Reed	3 wires	5 ÷ 30 V AC/DC	PNP	250 mA	10 VA / 8 W	Against polarity reversing	2 m
CST-232-5EX	Reed	3 wires	5 ÷ 30 V AC/DC	PNP	250 mA	10 VA / 8 W	Against polarity reversing and overvoltage	5 m
CST-332	Magneto-resistive	3 wires	10 ÷ 27 V DC	PNP	100 mA	6 W	Against polarity reversing and overvoltage	2 m
CST-332-5	Magneto-resistive	3 wires	10 ÷ 27 V DC	PNP	100 mA	6 W	Against polarity reversing and overvoltage	5 m
CST-332EX	Magneto-resistive	3 wires	10 ÷ 27 V DC	PNP	100 mA	6 W	Against polarity reversing and overvoltage	2 m
CST-332-5EX	Magneto-resistive	3 wires	10 ÷ 27 V DC	PNP	100 mA	6 W	Against polarity reversing and overvoltage	5 m
CST-432	Reed	3 wires	5 ÷ 30 V AC/DC	PNP-NC	250 mA	10 VA / 8 W	Against polarity reversing	2 m
CST-432-5	Reed	3 wires	5 ÷ 30 V AC/DC	PNP-NC	250 mA	10 VA / 8 W	Against polarity reversing	5 m
CST-432EX	Reed	3 wires	5 ÷ 30 V AC/DC	PNP-NC	250 mA	10 VA / 8 W	Against polarity reversing	2 m
CST-432-5EX	Reed	3 wires	5 ÷ 30 V AC/DC	PNP-NC	250 mA	10 VA / 8 W	Against polarity reversing	5 m
CST-532	Hall effect	3 wires	10 ÷ 27 V DC	PNP	100 mA	6 W	Against polarity reversing and overvoltage	2 m
CST-532-5	Hall effect	3 wires	10 ÷ 27 V DC	PNP	100 mA	6 W	Against polarity reversing and overvoltage	5 m
CST-532EX	Hall effect	3 wires	10 ÷ 27 V DC	PNP	100 mA	6 W	Against polarity reversing and overvoltage	2 m
CST-532-5EX	Hall effect	3 wires	10 ÷ 27 V DC	PNP	100 mA	6 W	Against polarity reversing and overvoltage	5 m

Note for 2-wire switches Mod. CST-220, CST-220-5:
 in case of polarity reversing the sensor will still be operating, but the LED diode won't turn on.

Magnetic proximity switches with M8 3-pin connector for T-slot

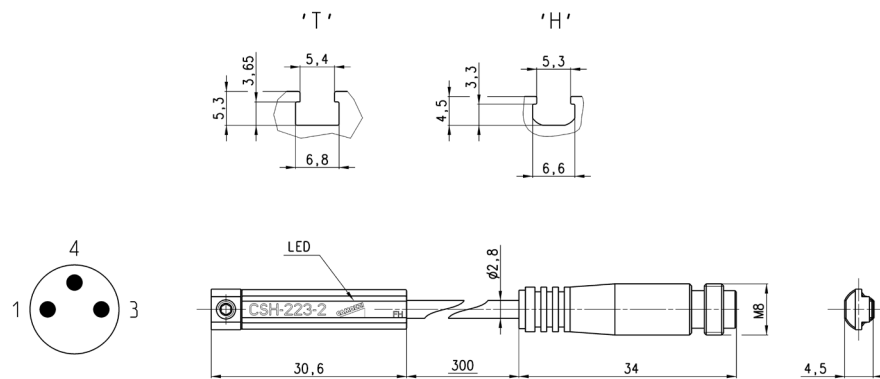


Cable length: 0,3 m

Mod.	Operation	Connection	Voltage	Output	Max. current	Max Load	Protection
CST-250N	Reed	2 wires M8 male 3 pin	10 ÷ 110 V AC/DC	-	250 mA	10 VA / 8 W	None
CST-250NEX	Reed	2 wires M8 male 3 pin	10 ÷ 110 V AC/DC	-	250 mA	10 VA / 8 W	None
CST-262	Reed	3 wires M8 male 3 pin	5 ÷ 30 V AC/DC	PNP	250 mA	10 VA / 8 W	Against polarity reversing
CST-262EX	Reed	3 wires M8 male 3 pin	5 ÷ 30 V AC/DC	PNP	250 mA	10 VA / 8 W	Against polarity reversing
CST-362	Magneto-resistive	3 wires M8 male 3 pin	10 ÷ 27 V DC	PNP	100 mA	6 W	Against polarity reversing and overvoltage
CST-362EX	Magneto-resistive	3 wires M8 male 3 pin	10 ÷ 27 V DC	PNP	100 mA	6 W	Against polarity reversing and overvoltage
CST-562	Hall effect	3 wires M8 male 3 pin	10 ÷ 27 V DC	PNP	100 mA	6 W	Against polarity reversing and overvoltage
CST-562EX	Hall effect	3 wires M8 male 3 pin	10 ÷ 27 V DC	PNP	100 mA	6 W	Against polarity reversing and overvoltage

Note for 2-wire switch Mod. CST-250N:
in case of polarity reversing the sensor will still be operating, but the LED diode won't turn on

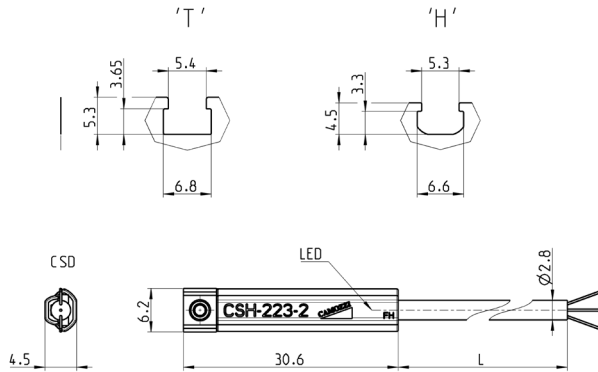
Magnetic proximity switches with M8 3-pin connector for H-slot



Cable length: 0,3 m

Mod.	Operation	Connection	Voltage	Output	Max. current	Max Load	Protection
CSH-253	Reed NO	2 wires M8 male 3 pin	10 ÷ 30 V AC/DC	-	250 mA	10 VA / 8 W	Against polarity reversing
CSH-253EX	Reed NO	2 wires M8 male 3 pin	10 ÷ 30 V AC/DC	-	250 mA	10 VA / 8 W	Against polarity reversing
CSH-263	Reed NO	3 wires M8 male 3 pin	10 ÷ 30 V AC/DC	PNP	250 mA	10 VA / 8 W	Against polarity reversing
CSH-263EX	Reed NO	3 wires M8 male 3 pin	10 ÷ 30 V AC/DC	PNP	250 mA	10 VA / 8 W	Against polarity reversing
CSH-364	Magneto-resistive	3 wires M8 male 3 pin	10 ÷ 27 V DC	PNP	250 mA	6 W	Against polarity reversing and overvoltage
CSH-364EX	Magneto-resistive	3 wires M8 male 3 pin	10 ÷ 27 V DC	PNP	250 mA	6 W	Against polarity reversing and overvoltage
CSH-463	Reed NC	3 wires M8 male 3 pin	10 ÷ 30 V AC/DC	PNP	250 mA	10 VA / 8 W	Against polarity reversing
CSH-463EX	Reed NC	3 wires M8 male 3 pin	10 ÷ 30 V AC/DC	PNP	250 mA	10 VA / 8 W	Against polarity reversing

Note for 2-wire switch Mod. CSH-253:
in case of polarity reversing the sensor will still be operating, but LED diode won't turn on.

Magnetic proximity switches with 2 or 3 wire cable for H-slot


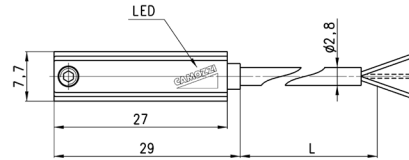
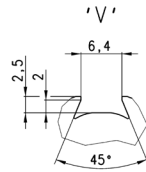
Mod.	Operation	Connection	Voltage	Output	Max. current	Max Load	Protection	L = cable length
CSH-223-2	Reed	2 wires	10 + 30 V AC/DC	-	250 mA	10 VA / 8 W	Against polarity reversing	2 m
CSH-223-5	Reed	2 wires	10 + 30 V AC/DC	-	250 mA	10 VA / 8 W	Against polarity reversing	5 m
CSH-223-10	Reed	2 wires	10 + 30 V AC/DC	-	250 mA	10 VA / 8 W	Against polarity reversing and overvoltage	10 m
CSH-223-2EX	Reed	2 wires	10 + 30 V AC/DC	-	250 mA	10 VA / 8 W	Against polarity reversing and overvoltage	2 m
CSH-223-5EX	Reed	2 wires	10 + 30 V AC/DC	-	250 mA	10 VA / 8 W	Against polarity reversing	5 m
CSH-223-10EX	Reed	2 wires	10 + 30 V AC/DC	-	250 mA	10 VA / 8 W	Against polarity reversing	10 m
CSH-221-2	Reed	2 wires	30 + 230 V AC - 30 ÷ 110 V DC	-	250 mA	10 VA / 8 W	Against polarity reversing	2 m
CSH-221-5	Reed	2 wires	30 + 230 V AC - 30 ÷ 110 V DC	-	250 mA	10 VA / 8 W	Against polarity reversing	5 m
CSH-221-2EX	Reed	2 wires	30 + 230 V AC - 30 ÷ 110 V DC	-	250 mA	10 VA / 8 W	Against polarity reversing	2 m
CSH-221-5EX	Reed	2 wires	30 + 230 V AC - 30 ÷ 110 V DC	-	250 mA	10 VA / 8 W	Against polarity reversing	5 m
CSH-233-2	Reed	3 wires	10 + 30 V AC/DC	PNP	250 mA	10 VA / 8 W	Against polarity reversing	2 m
CSH-233-5	Reed	3 wires	10 + 30 V AC/DC	PNP	250 mA	10 VA / 8 W	Against polarity reversing	5 m
CSH-233-2EX	Reed	3 wires	10 + 30 V AC/DC	PNP	250 mA	10 VA / 8 W	Against polarity reversing	2 m
CSH-233-5EX	Reed	3 wires	10 + 30 V AC/DC	PNP	250 mA	10 VA / 8 W	Against polarity reversing	5 m
CSH-334-2	Magnetostrictive	3 wires	10 + 27 V DC	PNP	250 mA	6 W	Against polarity reversing and overvoltage	2 m
CSH-334-5	Magnetostrictive	3 wires	10 + 27 V DC	PNP	250 mA	6 W	Against polarity reversing and overvoltage	5 m
CSH-334-2EX	Magnetostrictive	3 wires	10 + 27 V DC	PNP	250 mA	6 W	Against polarity reversing and overvoltage	2 m
CSH-334-5EX	Magnetostrictive	3 wires	10 + 27 V DC	PNP	250 mA	6 W	Against polarity reversing and overvoltage	5 m
CSH-433-2	Reed NC	3 wires	10 + 30 V AC/DC	PNP	250 mA	10 VA / 8 W	Against polarity reversing and overvoltage	2 m
CSH-433-5	Reed	3 wires	10 + 30 V AC/DC	PNP-NC	250 mA	10 VA / 8 W	Against polarity reversing	5 m
CSH-433-2EX	Reed	3 wires	10 + 30 V AC/DC	PNP-NC	250 mA	10 VA / 8 W	Against polarity reversing	2 m
CSH-433-5EX	Reed	3 wires	10 + 30 V AC/DC	PNP-NC	250 mA	10 VA / 8 W	Against polarity reversing	5 m

Note for 2-wire switches Mod. CSH-223-2, CSH-223-5, CSH-221-2, CSH-221-5:
 in case of polarity reversing the sensor will still be operating, but the LED diode won't turn on.

Magnetic proximity switches with 2- or 3-wire cable for V-slot

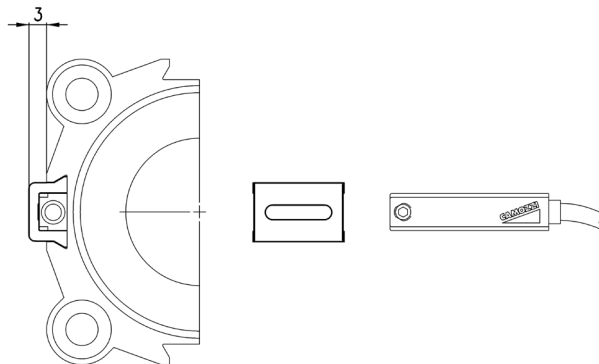
PNEUMATIC ACTUATION

1



Mod.	Operation	Connections	Voltage	Output	Max. current	Max Load	Protection	L = length cable
CSV-220	Reed	2 wires	10 ÷ 110 VAC/DC-230 V AC	-	250 mA	10 VA / 8 W	None	2 m
CSV-232	Reed	3 wires	5 ÷ 30 VAC/DC	PNP	250 mA	10 VA / 8W	Against polarity reversing	2 m
CSV-332	Magnetoresistive	3 wires	10 ÷ 27 V DC	PNP	100 mA	6 W	Against polarity reversing and overvoltage	2 m

Adapters for Series CST-CSH-CSG sensors, V-slot



Mod.	Series QP-QPR cylinders	Series 50 cylinders
S-CST-01	Ø 20 ÷ 100	Ø 32 ÷ 80